



PBIS Bulletin

Dates and Reminders

MIDWEST PBIS NETWORK

Implications of SB100.....Call to Action!

Illinois passed Senate Bill 100 four years ago. We know that policy alone does not change outcomes, and this article from the [Chicago Reporter](#) highlights the grim facts. We believe schools committed to implementing PBIS with fidelity will have data to show improvements in students accessing instruction!

We want to hear from you around SB100!

- What **system** changes (e.g.: policy, changing roles of administrators or clinicians) has your district made?
- What **practice** changes (e.g.: professional development on classroom practices, alternatives to suspension) have been made?
- And most importantly, what does your **data** show?



[Share your story!](#)

Additional resources:

In the August Coaches Bulletin, a few resources on discipline and suspensions were shared.

- Consider action steps suggested in [Suspension Doesn't Work: There's Gotta be a Better Way](#)
- Use [Rethinking Discipline](#) to guide staff discussion
- Bring along your [School Board!](#)

Upcoming Training Opportunities



Indiana Training Institute

December 4-6, 2018
Greenwood, IN

Two day trainings:

- Tier I Team Training
- Tier II Team Training

One day Training

- Tier I Coaching
- Classroom Practices

Visit [Fall Indiana Training Institute](#) page for more information and to register.

Winter Institute

February 5-7, 2018
Naperville, IL



Two Day Trainings

- Tier I Team Training
- Tier II Team Training
- FBA-BIP
- RENEW Training

One Day Training

- Tier I Booster
- Tier II Booster
- SWIS/TIPS
- Tier I Coaching
- Tier II Groups and Mentoring
- Classroom Practices
- Bullying Behavior Prevention
- Mental Health Integration within Schools

Visit [Winter Institute Training Institute](#) page for more information and to register.

Hotel Information: A room block available for reduced rate. Indicate *Midwest PBIS* group when making reservation.

Hampton Inn and Suites
1087 E Diehl Rd, Naperville 60563
630-505-1400 or 800-426-7866

Online reservations: <http://group.hamptoninn.com/MidwestPBIS>



South Winter Institute

February 26-28, 2019

Mt. Vernon, IL

Topics:

Tier I Team Training

Tier II Team Training

Tier I Coaching for Leaders

Classroom Practices

Visit the [South Winter Institute](#) page for more information and to register.

Coaches Network Meeting

2018-19 Coaches Network Meetings



We had a great start to Coaches Network Meetings in September! Come join us and schools in your region for *learning* and *networking*.

Topics for year:

November: PBIS Myth Busters: Common Misunderstandings

January: Become a Data Ninja: Using Data for Decision Making

April: Make it Fun: Teaching Students and Staff

Locations:

North

Algonquin
Lisle
Crestwood
Grayslake
East Moline

Central

Jacksonville / Quincy
Urbana

South

Vandalia
O'Fallon
Marion

[Register Now!](#)

Clinician Learning Forum

Coming this spring to a location near you!

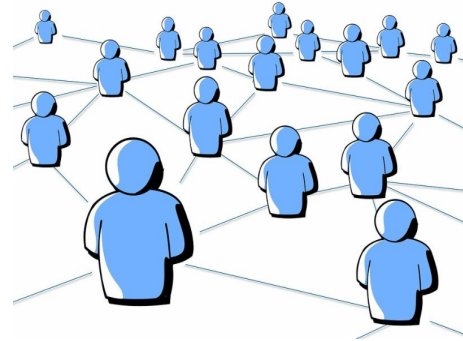
- Do you often find yourself contemplating your role in your district or building?
- Would you benefit from collaborating with other clinicians to define this role?
- Would you like to be looked upon as the social/emotional leader in your district or building?
- Would you like to build the capacity of all staff to support the social/emotional needs of students?

Join us to continue your learning and seeing how last year's participants have moved the work forward!! While the learning will be continuation from last school year, new clinicians will benefit as well.

Locations: Naperville, Springfield, and Carbondale

Dates: April 8 & 9, 2019

Watch [Clinician Learning Forum](#) page and future communications for more information!





Save the Date!

Training Institute Dates

Spring Institute

April 23-25, 2019

Naperville, IL

Summer Institute

July 16-18, 2019

Naperville, IL



Get ready for recognition!!

Begin planning now:

1. Review Action Plan items from your last completion of Tiered Fidelity Inventory
2. Identify needed action steps from [Recognition TA Page](#)
3. Plan to complete Tiered Fidelity Inventory this school year. [Video](#) to get your started!

For criteria and application process, please view the [Recognition page](#).

Email eval@midwestpbis.org with questions



How can we support your school?

Midwest PBIS Network is an approved IL EMPOWER learning partner for Climate and Culture. If your school received a designation of underperforming or lowest performing, you may have funding to receive direct support from Midwest PBIS Network.

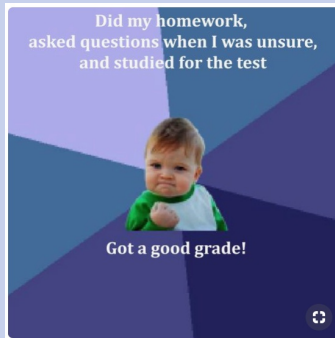
Review the [2018 Illinois Official Summative Designations](#) by ISBE and our [Midwest PBIS IL EMPOWER](#) webpage for more information.

Reach out to our co-directors for more information!

Brian Meyer (brian.meyer@midwestpbis.org) or
Sheri Luecking (sheri.luecking@midwestpbis.org)



For more resources, Like and follow us on Facebook and Twitter!



Share your favorite educator meme with sheri.luecking@midwestpbis.org then watch for it on Facebook!