

# MIDWEST PBIS NETWORK

## COACHES' CORNER



## Providing quarterly PBIS support!

*Coaches' Corner provides resources, tips, and updates for coaches to support your PBIS implementation efforts.*

## UPCOMING EVENTS

### Spring Institute April 10-12, 2018 NIU Naperville

1 and 2 day training opportunities on the following topics:

- Tier I
- Tier II
- RENEW
- Tier I Coaching for School and District Leaders
- Tier II Team: SAIG and Mentoring
- Classroom Management

Visit our [Spring Institute](#) webpage to learn more and register!

#### Reduced Rate Accommodations:

For a *reduced rate*, ask for the Midwest PBIS Room Block.

Country Inn and Suites  
1837 Centre Point Circle  
Naperville, IL 60563  
630-505-3353

[Register Today!](#)

### Clinician Learning Forum April 30 & May 1, 2018

*Social workers, psychologists, and counselors*

- Do you want time to think through what your role could look like in your building?
- Would you appreciate time to network with other clinicians who are looking toward the future role of the clinician?
- Do you want time with your principal to make plans about your role?
- Do you want to be recognized as the social/emotional leader in your building?

Join us for this 2 day event! Day 1 will be clinicians only assessing current state of roles and ideas for moving the clinician role forward. Administrators will join on Day 2 for some structured work time on products you can take back to your building to make system change. For more information, visit our [Clinician Learning Forum](#) page.

[Register Today!](#)

### Coaches Network Meetings

Join us in **April** for the last meeting of the year! We will be discussing and networking around developing your continuum of interventions through **Restorative Practices, groups, and mentoring.**

Find the nearest location to you and register to join us on our [Coaches Network Meeting](#)

### 2018-2019 Institute Dates

#### Naperville

Summer: July 17-19th, 2018

Winter: February 5-7th, 2019

Spring: April 23-25, 2019



[Register Today!](#)Mt. Vernon

South Winter: February 2019 – Dates coming soon!

## A Call for Action

### Prevent Gun Violence in the United States of America

Nineteen national experts have proposed a 8 point plan to prevent gun violence. Midwest PBIS Network has joined with over 50 national organizations representing over 5 million professionals in support of this plan.

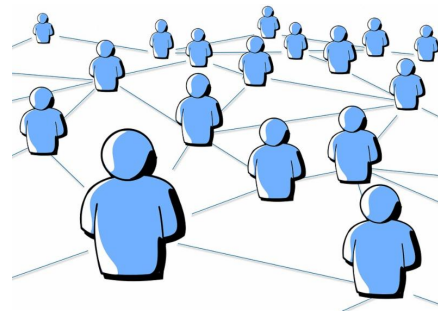
[Review the plan](#) and consider endorsing:

- [Organizational endorsement](#)
- [Individual endorsement](#)

## SPECIAL TOPIC

### Mental Health Integration: Interconnected Systems Framework (ISF)

"Twenty percent of children and youth have a clearly identified need for mental health service, but only about one-third of these children receive any help at all" ([Advancing Education Effectiveness](#)). While the reasons for not receiving treatment vary, we know schools become the defacto mental health provider. Often times schools do not have the expertise or resources needed to provide needed interventions. We need our systems to work together to ensure early identification, effective treatment, and improved educational and life outcomes for all students.



The Interconnected Systems Framework (ISF) is a structure and process to integrate PBIS and School Mental Health. By enhancing the core features of PBIS, ISF extends teaming structures to include community mental health providers, expands data sets to include community data, ensures early identification of students for interventions, and implementation of evidence based interventions that meet need and demonstrate effectiveness.

To learn more about the framework:

- Listen to National ISF Leader, Lucille Eber, in this [35 minute recorded overview](#)
- Explore the materials on our [Mental Health Integration tab](#)
- Sign-up to join the monthly [Targeted Workgroup](#) that meets virtually on a monthly basis to learn and network

## TECHNICAL ASSISTANCE TOPIC

### Stakeholder Engagement

Student, Families and Community Partners



**Are you *involving* or *engaging* students, families and community partners?**

***Involving*** leads with the mouth meaning that the needs, goals and solutions are already developed then students and families are asked to support. Whereas, ***engaging*** leads with the ear and collaborates with students, families and community partners in identifying needs, goals and developing solutions. Take inventory of your current engagement practices and identify which practices are already at level of engagement and which practices could be moved to engagement.

**How do you apply the multi-tiered logic to stakeholder**

## engagement?

Consider data (i.e. family survey or screener data, community data points, etc) to assist in determining where within the triangle to embed practices. For example, Sunshine Elementary has a high mobility rate (10%) and the Tier II systems team determine they will meet the needs of this small group of families with a Tier II group intervention. The group will meet monthly and families new to the school can join at anytime with the goal of school orientation strengthening community. Whereas, 30% of families at Rainbow Elementary are documented as being homeless indicating a universal need. The Tier I team determines the need to provide community supports (i.e.: laundry facilities, food pantry) within their school.

For more resources, see the [Coaches Network Meeting](#) materials from **January 2018**.

## We want to hear from you!!

- Share your improved outcomes from PBIS implementation.
- Tell us about your team's success using the TIPS model.
- Share your success from using precise problem statement to action plan.

Share, and your story may end up in a future newsletter, at Coaches Network Meeting, in training materials, or in conference sessions!

Share your story!

## EVALUATION

### Recognition

#### Recognition application is now available!

Steps to applying:

- 1) Identify [level of recognition](#) to apply for
- 2) [Download application](#) for review
- 3) Gather needed data and information
- 4) Complete TFI in [PBISApps](#)
- 5) Submit application online by **April 30th**

**Do you need help with your PBISApps account? Email [eval@midwestpbis.org](mailto:eval@midwestpbis.org)**



We hope you see great *value* in the recognition process! Here are a few *benefits* we see for your school applying for recognition from Midwest PBIS Network:

1. Acknowledges your work.
2. Gives you something tangible to share with stakeholders.
3. Provides public acknowledgement and opportunity to network with other schools at your level of implementation.
4. Defines your next steps in implementation.
5. Gains access to feedback and technical assistance.

Visit the [Recognition pages](#) on our website to learn more.



### SWIS

**Paperless referral entry is coming this spring!!** As part of the new User Management screen in SWIS, teachers will be able to submit their own referrals without a paper copy. When submitting a referral, teachers will be able to designate a reviewer (i.e.: dean, administrator) for the referral and the system will notify the reviewer. To learn more, visit [PBISApps](#).

## National Spotlight

Mark your calendars to join national leaders and school implementers at the **2018 National Leadership Forum!**

# PBIS: Celebrating Positive & Safe Learning Environments

October 4 - 5, 2018 | Hilton Chicago, Chicago, IL

## RESOURCES

### Practice Briefs from 2017 National Forum

Roundtable dialogues are scheduled for the current *hot* topics at 2017 National Leadership Forum. In follow-up to the roundtables, practice briefs to summarize the discussion are written. Explore and learn more on current topics below!



[RDQ 2: Aligning and Integrating Mental Health & PBIS](#)

[RDQ 6: Designing, Conducting & Reporting on Evaluation of PBIS Implementation](#)

[RDQ 8 & 9: Defining and Promoting Family Engagement](#)

[RDQ 10: PBIS within Residential and Juvenile Facilities: Sharing of Ideas and Resources](#)

[RDQ 16: Use of Screener for Identifying Additional Supports](#)

## Announcement

**The Midwest PBIS Network has been approved by the Illinois State Board of Education (ISBE) as an [IL-EMPOWER Learning Partner](#).** This means schools participating in IL-EMPOWER can choose Midwest PBIS as their Learning Partner.

IL-EMPOWER is the structure for a new statewide system for schools identified as “Comprehensive Support and Improvement Schools” and “Targeted Support and Improvement Schools” as part of the new ESSA accountability system.

The Midwest PBIS Network met the comprehensive requirements to provide services in the Climate and Culture “driver” of system change, as identified by IL-EMPOWER.

The Midwest PBIS Network will use its research-based, systems approach to school improvement in its role as an approved Learning Partner in order to increase the quality, fidelity, and sustainability of schools implementing multi-tiered behavior supports. Visit our [IL EMPOWER page](#) to learn more about how Midwest PBIS Network can support your school and district through IL-EMPOWER!

While ISBE is working out the details on how IL-EMPOWER will operate, we are available to answer any questions that you might have about how we will support schools and districts. Please contact us at [sheri.luecking@midwestpbis.org](mailto:sheri.luecking@midwestpbis.org) or [brian.meyer@midwestpbis.org](mailto:brian.meyer@midwestpbis.org).

## MEET THE TEAM



**Kelly Perales**  
Technical Assistance & Training Director, Mental Health Integration

[kelly.perales@midwestpbis.org](mailto:kelly.perales@midwestpbis.org)

Kelly is a Licensed Clinical Social Worker



**Katie Pohlman**  
Technical Assistance Director, Mental Health Integration

[katie.pohlman@midwestpbis.org](mailto:katie.pohlman@midwestpbis.org)

Katie brings experience with both community

with over 20 years of experience. Kelly has worked in public school, and in mental health both as a clinician and an administrator. She has been a part of the implementation of PBIS at the state, regional, and local level in both Illinois and Pennsylvania. Kelly is a leader in Mental Health Integration and PBIS, known widely as Interconnected Systems Framework (ISF). She supports sites across the country and is currently supporting implementation of ISF in a random control trial funded by the National Institute of Justice.

and school social work. Her desire to create equal opportunities for all along with her need to be efficient and effective led to her passion to support schools in implementing PBIS. Katie's current role with the network extends her passion as she facilitates sites to integrate school and mental health systems by enhancing the core features of PBIS through the Interconnected Systems Framework (ISF).

Meet our full team on our [Contacts Page!](#)

STAY CONNECTED

